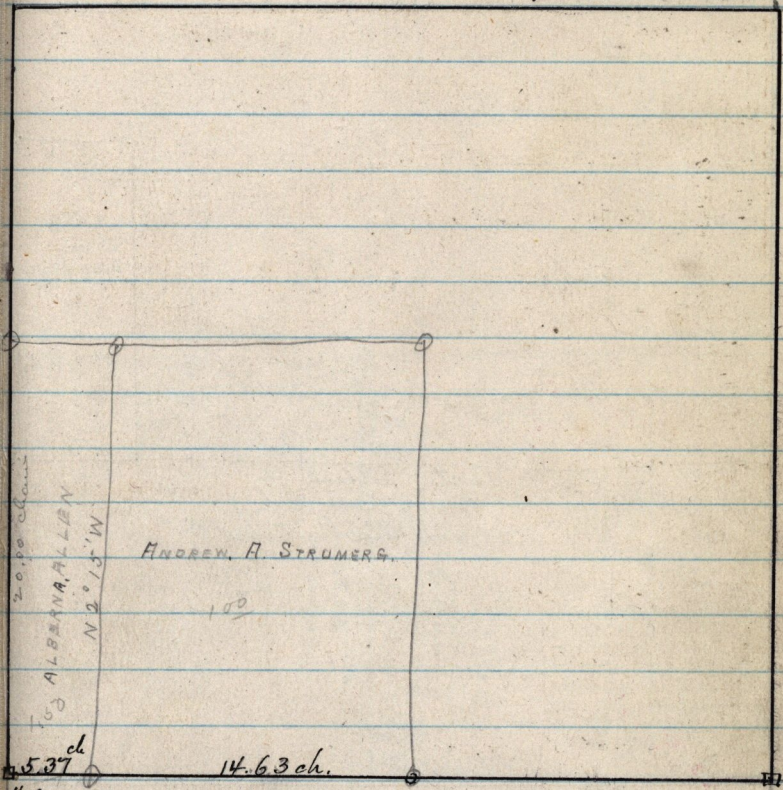


10.80  
27.46  
10.25

July 7-1885.

S. E. 1/4 Sec. 9 T. 6 N. R. 2 E.

S. W. 1/4 of above Entered by  
Hammond & Greenison



20.90 ch  
ALBERNA, ALLEN  
N 2° 15' W

ANDREW. H. STRUMERS.

100

5.37 ch  
1/4 Sec. stone

14.63 ch.

Sec.  
Cor.

5